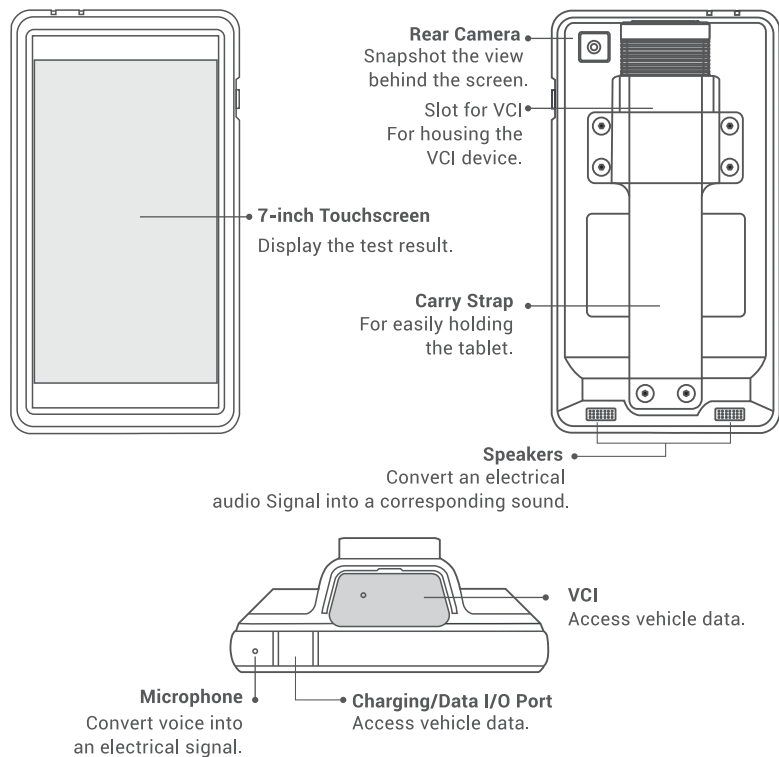


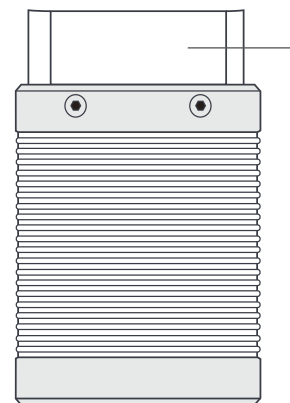
## Phoenix / Phoenix Lite

There are two main components to the Phoenix / Phoenix Lite system:

1. Phoenix / Phoenix Lite Display Tablet
2. VCI (Vehicle Communication Interface)

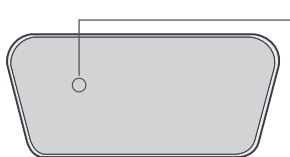


## VCI (Vehicle Communication Interface)



**OBD II 16pin Connector**  
(For connecting to vehicle's DLC port directly or OBD II extension cable)

The VCI works as a vehicle communication interface device, which is used to read the vehicle data and then send it to the tablet via Bluetooth communication.



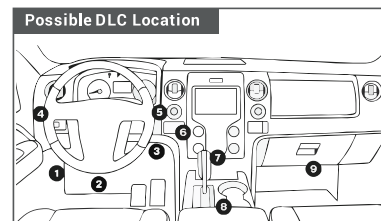
**Mode Indicator**

- RED indicates the VCI is plugged into the vehicle's DLC port.
- BLUE indicates the VCI is connected to the Phoenix / Phoenix Lite via Bluetooth.

### Install the VCI

1. Locate the vehicle's DLC port. See "Possible DLC Location".
2. Plug the VCI into the vehicle's DLC port.

\*For non-16 pin DLC socket, refer to "Preparation & Vehicle Connection" for details.



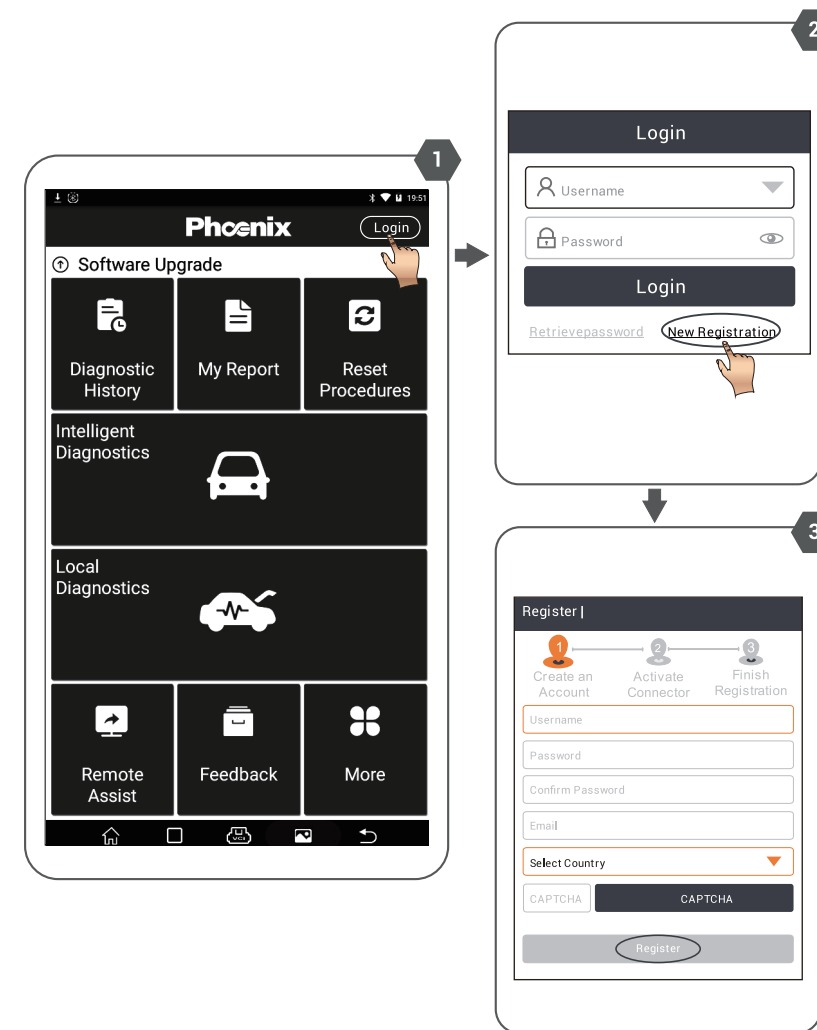
Remember to unplug the VCI from the vehicle while being idle, and exit all diagnostic processes before unplugging.

## 1. Register & Update

### 1. Network Setting

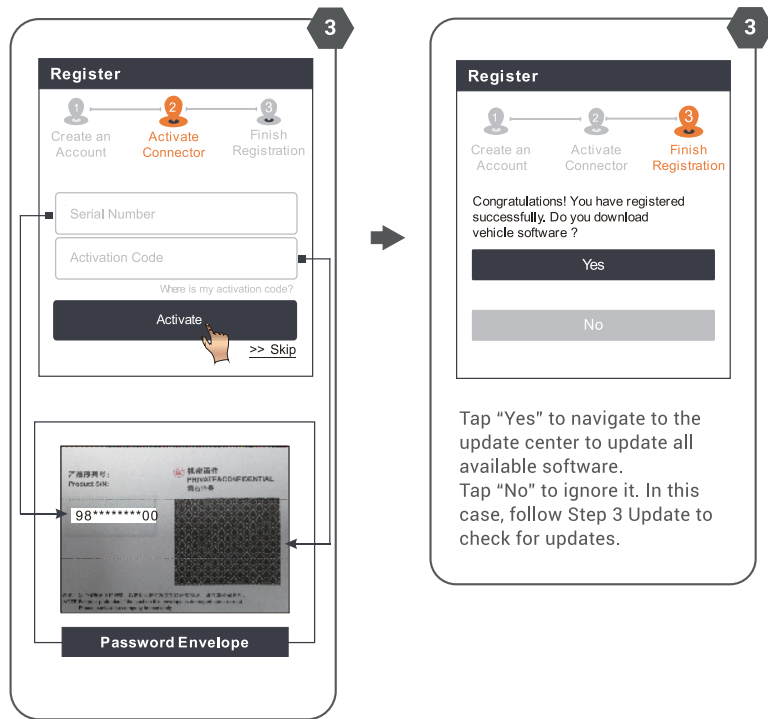
Tap [Settings] -> [Wi-Fi], select the desired Wi-Fi connection until "connected".

2. Launch the Phoenix / Phoenix Lite application, and register an account:



**IMPORTANT:** Read the instruction carefully and use the unit properly before operating. Fail to do so may cause damage and/or personal injury, which will void the product warranty.

\* **Note:** This Quick Start Guide is subject to change without written notice.



### 3. Update

All software is updated periodically. It is recommended to check regularly for updates and install the latest software version for the best service, functions and experience. Tap [Software Upgrade] on the main menu.

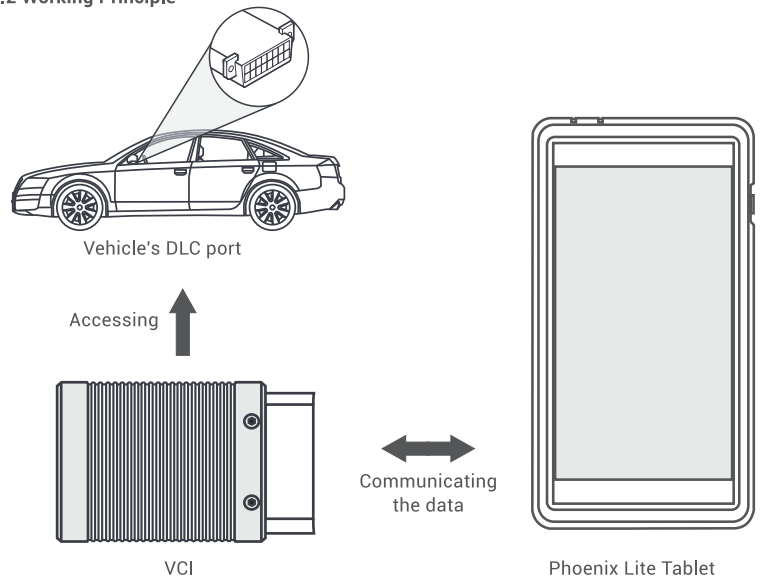
\* NOTE: Make sure the Wi-Fi connection is strong and stable while upgrading.

## 2. Preparation & Vehicle Connection

### 2.1 Preparation

- The ignition is turned on.
- The vehicle battery voltage is 9-18 volts.
- The throttle is in the closed position.

### 2.2 Working Principle



### 2.3 Vehicle Connection

#### 1. OBD II Vehicle Connection

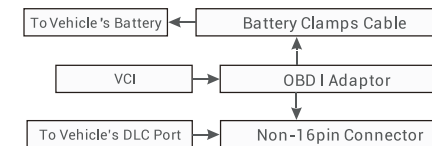
Plug the VCI into the Vehicle's DLC port directly, or use the OBDII extension cable to connect the VCI with the Vehicle's DLC port.

#### 2. Non-OBD II Vehicle Connection

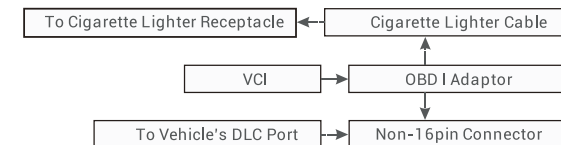
For non-OBD II vehicle, proceed as follows:

1. Locate vehicle's DLC port (refer to Section "VCI").
2. Connect one end of the OBD I adaptor to the VCI, and the other end to the non-16 pin connector.
3. Plug the other end of the non-16pin connector into the DLC port.
4. To supply power to the OBD I adaptor by one of the following ways:

A. Via battery clamps cable (optional): Connect one end of the battery clamps cable to vehicle's battery, and the other end to the power jack of the OBD I adaptor.



B. Via cigarette lighter cable (optional): Connect one end of the cigarette lighter cable to vehicle's cigarette lighter receptacle, and the other end to the power jack of the OBD I adaptor.



\*NOTE: Non-OBDII adapters are not included in Phoenix Lite package.

## 3. Start Diagnostics

Three diagnostic methods are available:

For new users, the Local Diagnostics is recommended as follows:

- **Intelligent Diagnostics:** The system will automatically guide you directly to the fix and help you eliminate guesswork, without step-by-step manual menu selection.
- **Local Diagnostics:** You need to manually select the menu-driven command.
- **Remote Diagnostics:** This helps repair shops or mechanics to diagnose a remote vehicle, and launch instant messages, allowing for improved efficiency and faster repairs.

